

# RISK ASSESSMENTS

## PROBLEMS AND SOLUTIONS

Construction  
Safety Priorities

Dangerous Goods  
Manifest

Events Calendar

Monthly Webinars



## What's new in April?

What problems come up time and again with Risk Assessments and what are the practical solutions? Gary explains this month.

Also what you need to know about Dangerous Goods Manifests and advice from the fire authority and WorkSafe's focus on construction safety, plus more safety news and events.



**Gary and Andrea Rowe**

***Stay Safe!***

### Safety Webinar – 14<sup>th</sup> April 10am

We invite you to join us at **10am on Friday 14<sup>th</sup> April** for our free monthly webinar to keep you up to date on workplace health and safety. Gary and the team present short informal sessions of only 20 to 30 minutes on topical issues and answer your questions.

**Register [here](#)**

***Missed our last webinar? View them [here](#)***

## Welcome Nick Bennett



Safety Action welcomes Nick Bennett to our team as a Safety Administrator. Nick is assisting with our team and clients with customer and administration support.

Nick possesses a Bachelor of Commerce from Deakin University and has over a decade of experience working in the Sale of Business Accounting Solutions & ERP systems & the real estate industry. He is excited to be part of the growing workplace safety industry.

We look forward to introducing him to our clients and friends over the coming weeks.

# Common Problems & Solutions for Risk Assessments

Over many years our team has noticed staff and contractors struggle to prepare efficient and effective risk assessments.

## What is the problem?

Firstly, most people don't know what type of risk assessment they are doing. There are two main types of risk assessment.

### 1. Quantitative

Needs lots of data, mainly used by specialists eg engineering consultants, aerospace, military and rail industries; and

### 2. Qualitative

Scenario based, mainly used by local teams eg manufacturing and related industries.

In workplace safety we mainly use qualitative risk assessments because we don't need the precision of quantitative assessments, and indeed don't have the vast amount of data to do predictive assessments.

*In workplace safety we use scenario-based risk assessments*

The sample risk assessment template below shows how we include our scenario in our assessment.

## RISK ASSESSMENT – UNIVERSAL WORKSHEET

Dep. / Specific Area: \_\_\_\_\_ Item Assessed eg Plant ID or Chemical: \_\_\_\_\_

Item No.	Potential Hazard <i>What is the hazard? Where is the hazard? and extent, injury?</i>	Doc./ Photo Ref.	Existing Controls	Initial Risk			OK? Yes/ No	Action Plan (if NO)	Final Risk Level
				Severity	Prob.	Risk Level			
	a) What is the hazard? b) Where is the hazard? c) What level of harm?								

Assessed by: \_\_\_\_\_ Date: \_\_\_\_\_

Consulted with: e.g. Maintenance, operator(s), H&S Rep: \_\_\_\_\_

Notes: Risk levels per separate Risk Matrix

## Scenario

Moving from left to right on the risk assessment worksheet we first list the hazard number eg No.1.

In the second column the scenario is simply expressed as a short sentence which includes the three main elements (below):

1. What is the hazard eg hot element.
2. Where is the hazard eg sealing unit on packaging machine No.1
3. What level of harm eg worker could sustain first aid or medical treatment burn to their hand.

The next column in our worksheet allows us to list what controls are currently in place (at time of assessment) eg nothing / nil, warning signage, worker care, guarding, procedure and competency-based training.



Now we know details of the hazard and existing controls we can use our risk matrix (sample below) to determine the initial risk level.

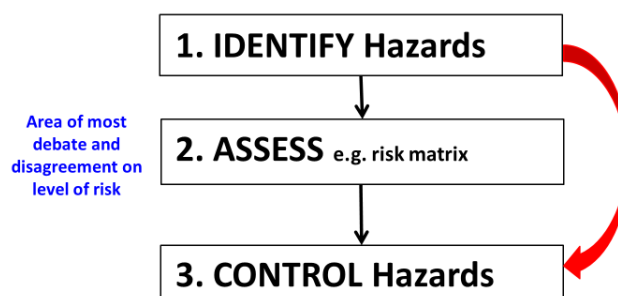
**Note:** The most common mistake we have observed in using the risk matrix is the false statement “for safety we need to be conservative and always take the worst case” eg highest possible severity.

The problem with this approach is you tend to make every hazard a high or extreme risk, which only delays managers identifying which hazards are the real highest risk and in need of urgent attention.

The good news is there is a quick solution. Skip the risk matrix and jump straight to implementation of the agreed controls. The safety regulations do not mandate the use of a risk matrix in any state.

However, if you have hundreds of hazards, using a risk matrix is helpful to identify your priority items.

## Risk Assessment Process



So, as long as we have general agreement on the hazard and necessary controls to prevent injury, which most work teams will readily support, then you don't need to use a risk matrix. The 5 x 5 risk matrix below demonstrates how taking the worst case severity exaggerates the risk estimate to extreme or high.

### Risk Matrix

Likelihood	SEVERITY				
	Insignificant (1)	Minor (2)	Moderate (3)	Major (4)	Catastrophic (5)
Rare (1)	1	2	3	4	5
Unlikely (2)	2	4	6	8	10
Possible (3)	3	6	9	12	15
Likely (4)	4	8	12	16	20
Almost certain (5)	5	10	15	20	25

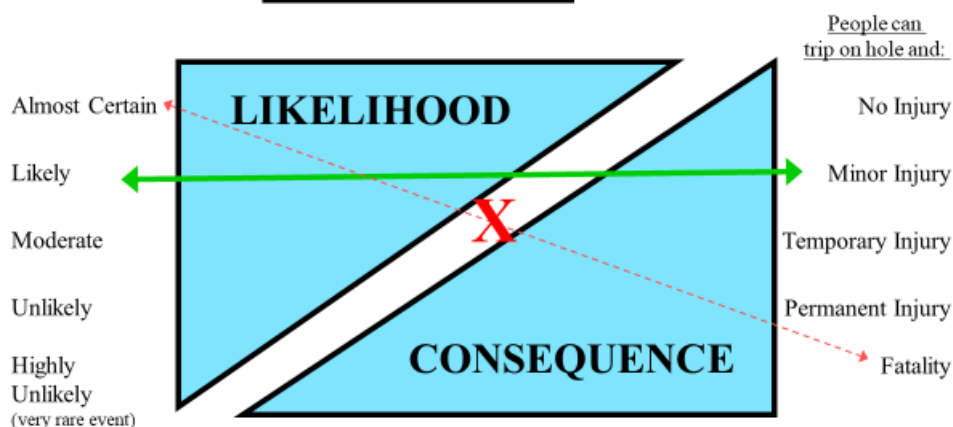
The next image demonstrates how a simple hole in the carpet can falsely become rated as an extreme risk by taking the worst severity, with the logic "it is highly likely someone will trip on the hole in the carpet in a busy walkway if not fixed, and at worst they could strike their head on a sharp corner of a desk and die".

We might not be able to totally discount the extreme risk of dying, but this is not the most likely outcome of tripping over in a carpeted office.

### Hazard Identified:

Hole in carpet causing trip and injury

### Risk Assessment:



It is far more likely that they will sustain a minor or temporary injury. In which case the risk matrix will show a moderate (yellow) risk level.

### Risk Matrix

Likelihood	SEVERITY				
	Insignificant (1)	Minor (2)	Moderate (3)	Major (4)	Catastrophic (5)
Rare (1)	1	2	3	4	5
Unlikely (2)	2	4	6	8	10
Possible (3)	3	6	9	12	15
Likely (4)	4	8	12	16	20
Almost certain (5)	5	10	15	20	25

There are many other subtleties associated with risk assessments and our team at Safety Action can demonstrate these along with practical solutions if desired.

***We conduct half-day workshops on conducting effective and efficient risk assessments, and also include this topic in our 2-day safety leadership foundations course.***

## All-Electric Road Tank Vehicle

WorkSafe Victoria has approved the design of an all-electric, lithium-ion powered, road tank vehicle for the transport of A1 jet fuel, a class 3 dangerous good under UN 1863.



The vehicle will be used only at Brisbane Airport for aircraft fueling and is the first non-internal combustion engine vehicle to be designed and approved under the Australian Dangerous Goods Code and Victoria’s Dangerous Goods Regulations 02018.

Learn more [here](#).

# Dangerous Goods Fire Advice Applications

## Who must request fire authority advice?

Premises that store Dangerous Goods (DGs) in quantities that exceed 'manifest' quantity must apply for written advice on their emergency plan from the state fire authority. Safety Action finds this requirement is frequently overlooked.

The authority may provide advice and recommendations on the site emergency plan, fire protection and DG emergency information book and DG manifest. We will provide more details about DG manifest and emergency information books in the next newsletter.

## Fire Rescue Victoria Cyber Attack and Lost Applications

Premises in Victoria with DGs exceeding Manifest Quantity must apply to Fire Rescue Victoria for advice on their emergency plan:


- When changes to DG quantities occur; and
- At least every 5 years



In December 2022 Fire Rescue Victoria (FRV) experienced a widespread IT outage following a cyber-attack. As a result of this attack, applications submitted before 9<sup>th</sup> January have been wiped with no way of FRV being able to recover them.

If you have recently applied and not received written advice, FRV request you resubmit your application and supporting documents.

More details [here](#).



***Your Tailored Contractor  
Management System***

Manage your workplace compliance  
easily with LinkSafe

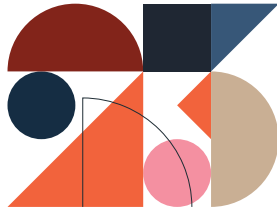
[Learn more today.](#)



***Fire and Safety Compliance in  
Buildings & Facilities***

[Tailored Emergency Training Online](#)  
[Essential Safety Measures](#)  
[Emergency Management](#)

# World Congress for Safety and Health, Sydney 2023



## “Digital transformation and the Human Factor in Machine and System Safety: Opportunities and Risks”

Safety Action’s Andrea Rowe joins speakers from all over the world at this year’s World Congress for Safety and Health. Andrea will be discussing Robotics and Cobots.

The conference is on from the 27<sup>th</sup> – 30<sup>th</sup> November 2023 in Sydney, Australia.

Spend the week networking and participating in workshops, forums and technical sessions while learning about emerging trends, develop new skills to mitigate new risks and gain knowledge of work health and safety best practices.

For more information and to register click [here](#).



## Construction Safety Priorities

WorkSafe Victoria has provided a Construction Priority harm’s document for the Construction industry with information about WorkSafe’s priority Harms program to reduce workplace harm in construction.

Their focus this year will be to target workplaces and focus on the most prevalent causes of fatalities and serious injuries and where they are most likely to occur in the building and construction industry.

WorkSafe inspectors will be visiting construction sites with a strong compliance and enforcement approach to ensure that priority harms and priority health harms are adequately controlled.

View the full document [here](#).

Civil	Commercial	Housing	Demolition
Priority Harms			
<b>Falls from height</b> <ul style="list-style-type: none"> <li>Mobile plant</li> </ul> <b>Electricity</b> <ul style="list-style-type: none"> <li>Isolation of power</li> <li>Overhead/Underground powerlines</li> </ul> <b>Falling objects</b> <ul style="list-style-type: none"> <li>Lifting loads</li> </ul> <b>Moving Plant</b> <ul style="list-style-type: none"> <li>Traffic management</li> <li>Plant/Plant – People/Plant Interaction</li> <li>Maintenance</li> </ul> <b>Trenching</b> <ul style="list-style-type: none"> <li>Engulfment/Ground conditions</li> <li>Falls &amp; Falling objects</li> </ul> <b>Crystalline Silica exposure</b>	<b>Falls from height</b> <ul style="list-style-type: none"> <li>Ladders</li> <li>Formwork</li> <li>Scaffold</li> </ul> <b>Electricity</b> <ul style="list-style-type: none"> <li>Isolation of power</li> <li>Overhead powerlines</li> </ul> <b>Falling objects</b> <ul style="list-style-type: none"> <li>Tools</li> <li>Materials</li> </ul> <b>Moving Plant</b> <ul style="list-style-type: none"> <li>Plant/Plant – People/Plant Interaction</li> <li>Maintenance</li> </ul> <b>Crystalline Silica exposure</b>	<b>Falls from height</b> <ul style="list-style-type: none"> <li>Steps, stairs &amp; voids</li> <li>Roofs</li> <li>Ladders</li> </ul> <b>Electricity</b> <ul style="list-style-type: none"> <li>Isolation of power</li> <li>Overhead/Underground powerlines</li> </ul> <b>Structural collapse</b> <ul style="list-style-type: none"> <li>Flooring</li> <li>Trusses</li> <li>Walls, vertical and steel structures</li> </ul> <b>Crystalline Silica exposure</b>	<b>Falls from height</b> <ul style="list-style-type: none"> <li>Mobile plant</li> <li>Scaffold</li> </ul> <b>Electricity</b> <ul style="list-style-type: none"> <li>Isolation of power</li> <li>Overhead/Underground powerlines</li> </ul> <b>Falling/flying objects</b> <ul style="list-style-type: none"> <li>Materials</li> </ul> <b>Structural collapse</b> <ul style="list-style-type: none"> <li>Internal floor</li> <li>Overall structure</li> </ul> <b>Crystalline Silica exposure</b> <b>Asbestos</b>
<small>*While the above list of hazards outlines the areas of the focus for the Priority Harms Program, it does not discharge your duty to control all hazards which may be present at your workplace, so far as is reasonably practicable.</small>			

Sample of document





# Events and Training



National  
Health & Safety  
Conference

## AIHS National Health & Safety Conference 2023 Influence For Impact

30 May – 1 June 2023, Brisbane

The **AIHS National Health and Safety Conference** will be held from 30th May to 1st June 2023. This year's conference theme is **Influence for Impact**.

Each speaker will examine different aspects of the theme, presenting a wide variety of new ideas, innovations, and research.

### EVENT DETAILS:

**Date:** Tuesday 30th May - Thursday 1st June 2023

**Time:** 9:00am - 5:00pm

**Venue:** Brisbane Convention Centre, Glenelg Street, South Brisbane QLD 4101

[Click here](#) for more information and to register.



### Tailored Contractor Management System

Monthly Webinars on contractor  
management and safety.

April's Webinar topic: Cyber Safety.

Register and see more information [here](#).



### Legal Solutions. Found.

Online Friday Workplace Briefing straight to  
you with critical news and developments  
that affect your workplace.

**Friday's 10.30am.**

[Register here.](#)

## Safety Action Breakfast Briefing Safety Q&A Session

Join us on **Thursday the 27<sup>th</sup> April from 7.30am to 9am.**



Safety Action Conference Room, Clayton.  
Enjoy breakfast and networking with  
like-minded colleagues.

*This is a free event.*

[Book now.](#)



**SOUTHERN SAFETY GROUP**

**DON'T LEARN ABOUT SAFETY BY ACCIDENT**



***Southern Safety Group (not for profit) exists to provide members with quality, relevant and practical advice on workplace OH&S issues.***

**Monthly Meetings at Surdex steel, 46 Brooks Drive, Dandenong Victoria.**

Held on the last Monday of the month from 3pm to 5pm.

Providing monthly meetings to offer assistance and advice to members and to provide a forum for discussion of health and safety ideas, issues, problems and solutions.

More information and contact SSG [here](#).

## Psychosocial Hazards Workshop

**Tuesday 9th May from 8am-12pm**

**Where:** In Person at Safety Action, Clayton

This half-day workshop will update participants on the legislative and code requirements by state for employers to monitor and manage psychological health issues in the workplace. The session will also include practical exercises on conducting psychological health risk assessments for each of the legislated categories including:



- The highly charged and topical "high job demands" risk assessment
- Bullying
- Sexual harassment
- Workplace violence and aggression
- Exposure to traumatic content

[Book here](#) or [contact us](#) for more information.

**\*We plan to offer an online version of this workshop in the near future.  
More information in our next newsletter.**