

STORM SAFETY

Dr Weber
Update

Safety Job's
Available

Join Our Monthly
Webinars

Transport
Company Fined

What's new in March?

With the summer humidity comes summer storms that can build up quickly. This month we discuss precautions to take to prevent lightning strike injuries.

Also this month, Dr Stephen Weber starts lecturing the safety consultants of the future and a transport company is fined after an electric shock



Andrea

Stay Safe!

Safety Webinar – 10th March 10am

We invite you to join us at **10am on Friday 10th March** for our free monthly webinar to keep you up to date on workplace health and safety. Gary and the team present short informal sessions of only 20 to 30 minutes on topical issues and answer your questions.

Register [here](#)

Missed our last webinar? View them [here](#)



Andrea Rowe



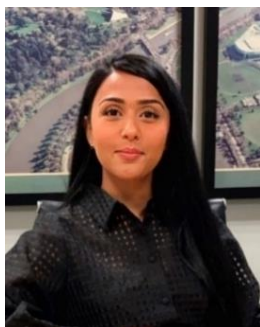
Stephen Weber



Katie Weber



Gary Rowe



Sue'Ellen Bennett



Vivek Ravi



Sarah Oliver

Storm Safety

In Australia lightning causes between 6 and 10 deaths and over 100 severe injuries a year.

Lightning can be an occupational hazard, particularly for outdoor workers.

In 2017 a group of eleven men, working outdoors on a rail line in WA's Northern Goldfields, were all struck by lightning. Miraculously all walked away to tell the tale.



Lightning can cause injuries or death in several ways, including:

- **Direct strike** – when a person is directly struck by lightning;
- **Contact voltage** – when a person is in direct contact with conductor that has been struck by lightning, either inside or outside a structure;
- **Side flash** – when a person is struck by an arc or flash from a conductor carrying a lightning strike near the person; and
- **Ground current** – injuries can occur when standing in the area of a lightning strike as the current can flow through the ground and enter and exit the body through the feet.

Businesses should proactively identify lightning hazards that may be relevant to operations and have procedures in place to manage these risks.

Precautions for outdoor workers during a lightning storm:

- Seek shelter in a substantial building or a metal bodied car when the lightning - thunder gap is less than 30 seconds.
- Never shelter under trees.
- If boating or engaged in aquatic activities, head for shore straight away. If this is not practicable when on a boat deck, keep a low profile and avoid contact with masts, rails, stay wires or metallic objects and avoid contact with water.
- Avoid touching and proximity to metal objects that may become part of the discharge path, for example towers, mobile plant, fences and pipes.
- Avoid using electrical equipment, hand tools and landline telephones.
- Avoid handling fishing rods, umbrellas, golf clubs or any metal objects and stay clear of sheet metal, wire fences, clotheslines, streams, pools of water etc.

- If caught in the open, crouch down with your feet together as low as possible with minimal contact with the ground. Do not lie down. If in a group, stay approximately three meters from other persons.



Lightning strike on a vehicle:

A lightning strike on a vehicle may cause heating of the tyre rubber (inner liner) which then releases gaseous, volatile organic compounds into the tyre's air chamber. Under certain temperature, this volatile combination of air and fuel can become an explosive mixture and ignite. However vehicle occupants are usually safe.

Interesting New laser technology:

Traditionally lightning rods have been used to direct lightning away from populated areas. But for the first time in the field, scientists in Switzerland have used laser technology to successfully steer away lightning bolts.

Demonstrating this new technology during heavy storms atop a Swiss mountain, scientists fired pulses of a powerful laser at thunderclouds diverting lightning bolts by creating an easier path for the electrical discharge to flow along.

It is hoped that laser-based protection systems can be used at airports, tall buildings & critical ground installations in the future.

For further information on lightning safety visit:

[WorkSafe website](#) or [Bureau of meteorology](#)

Dr Weber Lecturing at Federation University

One of our senior consultants, Dr Stephen Weber, is now sharing his working week with us and Federation University. Stephen has taken on a part-time role as a lecturer of Workplace Health and Safety.

He will be delivering the [Masters of Health \(Workplace Health and Safety\)](#) program, a course that many of our team have undertaken as part of their foundation in health and safety.



We at Safety Action love to share our knowledge on workplace health and safety, so Stephen's new role is understandable and strongly supported by the whole team.

Stephen firmly believes we need to actively grow Australia's WHS education at all levels, and ensure they deliver a solid foundation of knowledge, principles and ethics towards developing and supporting effective WHS professionals which we need now and into the future.

Stephen will still support Safety Action clients and enquires, but there may be a delay if he is lecturing. However, the rest of the Safety Action team will shoulder any gaps and ensure you receive a prompt response.

Feel free to contact Stephen as he is more than happy to chat about his change and the course.

Breakfast Briefing- Free Event Machinery & Digital Technology

Join us on **Thursday the 27th April from 7.30am to 9am.**



Safety Action Conference Room, Clayton.
Enjoy breakfast and networking with like-minded colleagues.

More details to come.

[Book now.](#)

Transport Company Fined After Electric Shock



Malina Enterprises was convicted and fined \$75,000 (plus costs) after a worker suffered an electric shock when a mobile crane struck overhead power lines at a Dromana construction site.

In April 2021 the injured worker was delivering prefabricated roof trusses to the work site in a truck that had a vehicle mounted crane.

The worker was unaccompanied and had not prepared a Safe Work Method Statement. On arrival he positioned the vehicle in a 'No Go Zone'. Operating the crane without a spotter, the jib of the crane hit the 22kV power lines throwing the worker to the ground.

The court heard Malina Enterprises had previously made deliveries to the work site but the injured worker had not been told where to park the truck in order to unload safely eg inadequate traffic management.

For more information visit [WorkSafe](#).

Safety Job Board

SH&E Systems Coordinator



Nutrien Ag Solutions is seeking a highly motivated individual with a minimum of 3 year's experience in either a safety administration role, or a combination of field safety and administration experience.

For more information and to apply [click here](#).

Health, Safety & Wellbeing Advisor 6 month, Part time position



Box Hill Institute (BHI) are looking for a new HSW Advisor with a working knowledge of Chemical management, noise management and Operational Risk Assessments.

See [our website](#) for more information and how to apply.

[Email us](#) if you would like to advertise a safety role in your organisation on our website.